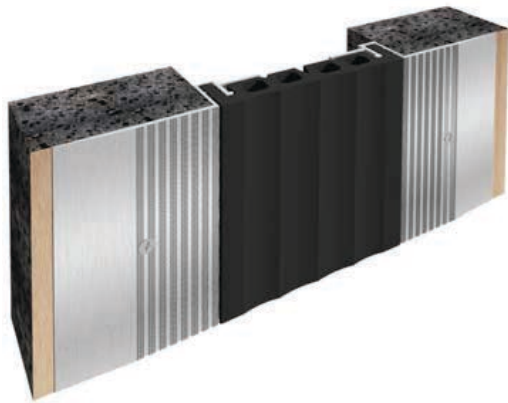


**SWJ4**

Surface Fix



**Description**

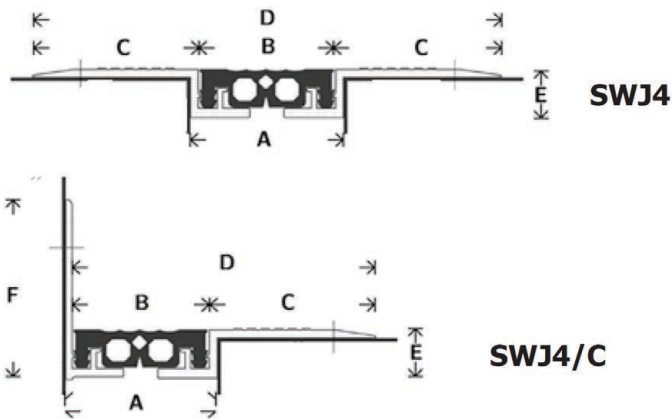
Anodised aluminum expansion joint with visible weather seal for interior joints on walls and ceilings. Fixed directly onto the finished wall/ceiling surface.

**Materials**

Anodized aluminium 6063/T6  
PVC Joint Seals

**Supply Lengths**

Aluminium Profile: 4m  
Joint Seals: 25m  
Custom lengths can be produced to order.



**PVC Joint Seal Colour**



Black



Beige



Grey

(Other colors available subject to 500m minimum order)

TYPE	A	B	C	D	E	F	*Total Movement
<b>Flat Profile</b>							
SWJ4 20	20	15	38	91	16	-	12
SWJ4 30	30	26	43	112	16	-	20
SWJ4 50	50	46	55	156	17	-	30
SWJ4 75	75	69	65	185	30	-	36
SWJ4 100	100	96	75	226	33	-	34
SWJ4 125	125	115	75	265	33	-	64
SWJ4 150	150	140	35	290	33	-	90
<b>Corner Profile</b>							
SWJ4/C 20	20	18	38	56	16	37	12
SWJ4/C 30	30	26	43	69	16	63	20
SWJ4/C 50	50	46	55	101	17	69	30
SWJ4/C 75	75	65	58	123	30	68	36
SWJ4/C 100	100	96	65	161	33	87	34
SWJ4/C 125	125	116	55	171	17	69	64
SWJ4/C 150	150	141	55	196	17	69	90

\*Movements do not take into consideration PVC elongation at break (ISO R 527)

Dimension in mm